

# THE ART DEPARTMENT – 2013-14

## ART CRAFT AND DESIGN - ENRICHMENT CLUB PROGRAMME

### Teacher & Venue

Ms Davis – E2

Wk1 Thurs 3-4pm

Wk 2 Thurs 3-4pm

### Autumn Term

Mixed media

Sculpture



### Spring Term

Sculptural

Felting



### Summer Term

GCSE Support



Mr Cooney – E4

Wk 1 Wed 3-4pm

Wk 2 Wed 3-4pm

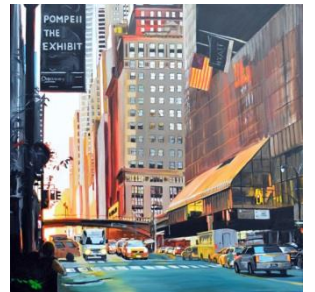
2D Stencil Art



Street Art



GCSE Support



Miss Munn – E3

Wk 1 & 2

Mon & Thurs

3-4pm

Printmaking

Techniques



Photography



Animation



Mr Marsh – E2

Wk 1 Mon 3-4pm

Wk 2 Mon 3-4pm

Clay Sculpture

& Pottery



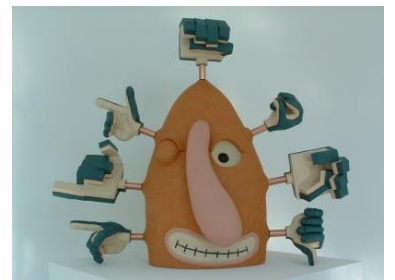
Clay Sculpture

& Pottery



Clay Sculpture

& Pottery



Workshops Open to KS3 & 4

See your Art Teacher to Sign up – acceptance to clubs by teacher agreement

GCSE Studio Support with MDA by arrangement - Monday & Friday 2<sup>nd</sup> Break.

GCSE Studio Support with ACO by arrangement - Monday & Friday 3-4pm.